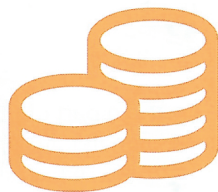


Sponsored by:

ALUMASC
FACADE SYSTEMS



BEST COMMERCIAL PROJECT

Including a wide range of office, hotel and business construction projects, The Best Commercial Project Award is open to large and small scale projects - in both footprint and budget. Entries have displayed a clear understanding of how to apply timber technology to deliver a sustainable, energy efficient and cost-effective contemporary building.

Finalists have explained how they have displayed innovation and worked collaboratively to help the client achieve its corporate vision. Particular note has been given to overcoming restrictive construction sites and working within internal planning guidelines.

01

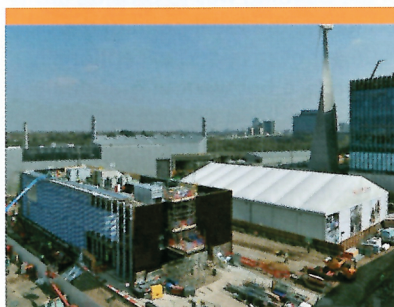
ARUP ASSOCIATES BSKYB BELIEVE IN BETTER BUILDING



The Believe in Better Building (BIBB) is a pioneering office and training building, the first 4 storey, open-plan massivholz office in the UK. It demonstrates the potential for timber offices to deliver high speed, high quality and exemplar sustainable commercial buildings, opening up an exciting new UK market for timber. Timber was used for its speed of construction and sustainability credentials, with offsite manufacture bringing huge programme benefits and minimizing disturbance. Collaboration through the supply chain was key in this on a restricted site in the middle of Sky's campus.

02

ARUP SKY HEALTH & FITNESS CENTRE



Arup worked with dRMM architects and Mace to deliver this unique gymnasium in just 16 months. By turning framing beams on their sides a nearly flat soffit was produced to allow for fast and easy services integration and higher ceilings, which removed the need for detailed coordination of services openings. Dynamics can have a major impact on timber structures, especially important given the fitness use of the building. New design criteria, connection details and analysis methods were developed to verify the performance and then tested onsite. The final design demonstrates a broad understanding of design performance, delivering a quick turnaround and increasing the attractiveness of timber in construction.

03

CARSON AND PARTNERS EAST SANDS DEVELOPMENT



Reusing previously developed land and improving access to the appearance of Scotland's coast are key elements of Scottish Planning Policy, as is recognising the positive contribution that universities play in the economy and the character of the country's settlements. Bringing these factors together, Alumno Developments was granted planning permission to redevelop a coastal area of St Andrews' East Sands district. The plans involve replacing the site's existing Wonder Years Nursery with modern childcare facilities and incorporating high-quality student accommodation for approximately 153 students into the new building designed by Carson and Partners Architects.

Continued...